

LAGOS

DOUBLE SIDE LED ATOMIC BOARD 2ND ROUNDABOUT LEKKI EXPRESSWAY



DIMENSIONS : 15m X 5M

TRAFFIC COUNT : 250,000 daily

ILLUMINATION : Digital

DISPLAY TIME : 18hours

RESOLUTION

STATUS

This board is located within a high brow residential area with a mix of SME, corporate organizations, hospitality, Oil & Gas business and retail outfits etc. The population spread also includes the ABC socio-economic group.

FOUR SIDED LED CUBE

1ST ROUNDABOUT LEKKI EXPRESSWAY



DIMENSIONS : 4m X 4M

TRAFFIC COUNT : 250,000 daily

ILLUMINATION : Digital

DISPLAY TIME : 18hours

RESOLUTION

STATUS

This board is located within a high brow residential area with a mix of SME, corporate organizations, hospitality, Oil & Gas business and retail outfits etc. The population spread also includes the ABC socio-economic group.

DOUBLE SIDED LED BOARD OZUMBA MBADIWE ROAD VICTORIA ISLAND



DIMENSIONS : 4m X 3M

TRAFFIC COUNT : 250,000 daily

ILLUMINATION Digital

DISPLAY TIME : 18hours

RESOLUTION

STATUS

This board is located within a high brow residential area with a mix of SME, corporate organizations, hospitality, Oil & Gas business and retail outfits etc. The population spread also includes the ABC socio-economic group.

BACKLIT 48SHEET BOARD ALONG LEKKI EXPRESSWAY



DIMENSIONS : 3m X 6M

TRAFFIC COUNT : 250,000 daily

ILLUMINATION : Back Lit

DISPLAY TIME : 24hours

RESOLUTION

STATUS : Vacant

This board is located within a high brow residential area with a mix of SME, corporate organizations, hospitality, Oil & Gas business and retail outfits etc. The population spread also includes the ABC socio-economic group.

BACKLIT 48SHEET BOARD ALONG LEKKI EXPRESSWAY



DIMENSIONS : 3m X 6M

TRAFFIC COUNT : 250,000 daily

ILLUMINATION : Back Lit

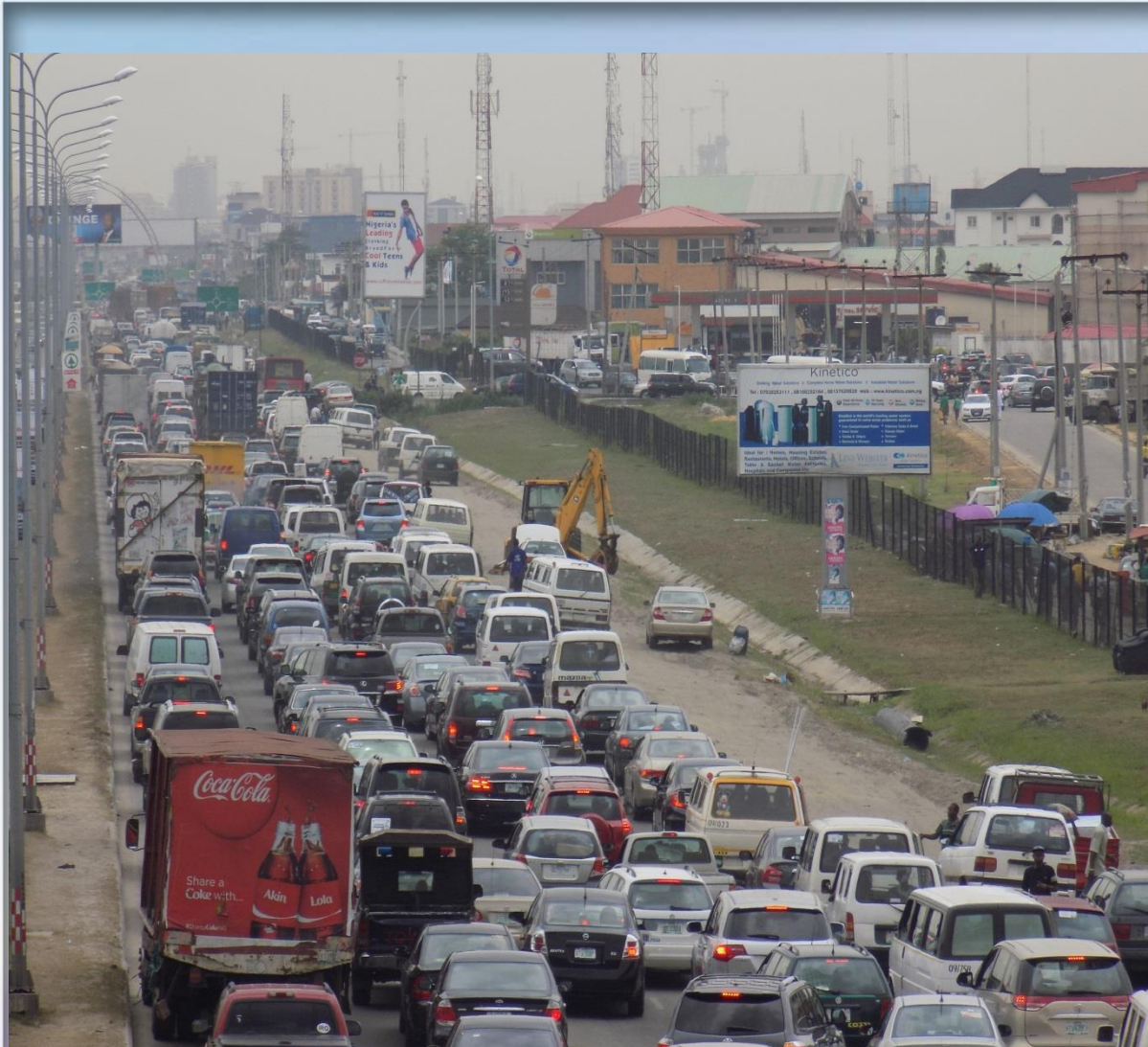
DISPLAY TIME : 24hours

RESOLUTION

STATUS : Vacant

This board is located within a high brow residential area with a mix of SME, corporate organizations, hospitality, Oil & Gas business and retail outfits etc. The population spread also includes the ABC socio-economic group.

SUPER 48SHEET BOARD ALONG LEKKI EXPRESSWAY



DIMENSIONS : 3m X 6M

TRAFFIC COUNT : 250,000 daily

ILLUMINATION : Nil

DISPLAY TIME : 24hours

RESOLUTION

STATUS

This board is located within a high brow residential area with a mix of SME, corporate organizations, hospitality, Oil & Gas business and retail outfits etc. The population spread also includes the ABC socio-economic group.

DOUBLE FACE BRIDGE PANEL ALONG LEKKI EXPRESSWAY



DIMENSIONS : 34m X 2M

TRAFFIC COUNT : 250,000 daily

ILLUMINATION : Front Lit

DISPLAY TIME : 24hours

RESOLUTION

STATUS

This board is located within a high brow residential area with a mix of SME, corporate organizations, hospitality, Oil & Gas business and retail outfits etc. The population spread also includes the ABC socio-economic group.

DOUBLE FACE BRIDGE PANEL ALONG LEKKI EXPRESSWAY



DIMENSIONS : 34m X 2M

TRAFFIC COUNT : 250,000 daily

ILLUMINATION : Front Lit

DISPLAY TIME : 24hours

RESOLUTION

STATUS

This board is located within a high brow residential area with a mix of SME, corporate organizations, hospitality, Oil & Gas business and retail outfits etc. The population spread also includes the ABC socio-economic group.

LONG BANNER ALONG LEKKI EXPRESSWAY



DIMENSIONS : 50m X 2M

TRAFFIC COUNT : 250,000 daily

ILLUMINATION : Front Lit

DISPLAY TIME : 24hours

RESOLUTION

STATUS

This board is located within a high brow residential area with a mix of SME, corporate organizations, hospitality, Oil & Gas business and retail outfits etc. The population spread also includes the ABC socio-economic group.

LONG BANNER OPP MOBILE HOUSE



DIMENSIONS : 15m X 5M

TRAFFIC COUNT : 250,000 daily

ILLUMINATION : Front Lit

DISPLAY TIME

RESOLUTION

STATUS

This board is located within a high brow residential area with a mix of SME, corporate organizations, hospitality, Oil & Gas business and retail outfits etc. The population spread also includes the ABC socio-economic group.

PORTRAIT BOARD ALONG LEKKI EXPRESSWAY



DIMENSIONS : 7.6m X 5.3M

TRAFFIC COUNT : 250,000 daily

ILLUMINATION : NIL

DISPLAY TIME : 24hours

RESOLUTION

STATUS

This board is located within a high brow real estate axis and other facilities such as hospitality, retail malls, SMEs etc targeted at the socio-economic group ABCD.

PORTRAIT BOARD ALONG LEKKI EXPRESSWAY



DIMENSIONS : 7.6m X 5.3M

TRAFFIC COUNT : 250,000 daily

ILLUMINATION : NIL

DISPLAY TIME : 24hours

RESOLUTION

STATUS

This board is located within a high brow real estate axis and other facilities such as hospitality, retail malls, SMEs etc targeted at the socio-economic group ABCD.

BULLETIN BOARD ALONG LEKKI EXPRESSWAY



DIMENSIONS : 3m X 12M

TRAFFIC COUNT : 250,000 daily

ILLUMINATION : NIL

DISPLAY TIME : 24hours

RESOLUTION

STATUS

This board is located within a high brow real estate axis and other facilities such as hospitality, retail malls, SMEs etc targeted at the socio-economic group ABCD.

BULLETIN BOARD ALONG LEKKI EXPRESSWAY



DIMENSIONS : 3m X 12M

TRAFFIC COUNT : 250,000 daily

ILLUMINATION : NIL

DISPLAY TIME : 24hours

RESOLUTION

STATUS

This board is located within a high brow real estate axis and other facilities such as hospitality, retail malls, SMEs etc targeted at the socio-economic group ABCD.

DOUBLE SIDED ARC FLAG 5th ROUNDABOUT LEKKI EXPRESSWAY



DIMENSIONS : 19.75m X 7M

TRAFFIC COUNT: 250,000 daily

ILLUMINATION : NIL

DISPLAY TIME : 24hours

RESOLUTION

STATUS

This board is located within a high brow real estate axis and other facilities such as hospitality, retail malls, SMEs etc targeted at the socio-economic group ABCD.

DOUBLE SIDE HALF RING 4TH & 6TH ROUNDABOUT LEKKI EXPRESSWAY



DIMENSIONS : 15m X 5M

TRAFFIC COUNT : 250,000 daily

ILLUMINATION

DISPLAY TIME

RESOLUTION

STATUS

This board is located within a high brow real estate axis and other facilities such as hospitality, retail malls, SMEs etc targeted at the socio-economic group ABCD.

DOUBLE SIDE FULL GANTRY BY MRS STATION ALONG LEKKI EXPRESSWAY



DIMENSIONS : 50m X 4.8M

TRAFFIC COUNT : 250,000 daily

ILLUMINATION

DISPLAY TIME

RESOLUTION

STATUS

This board is located within a high brow real estate axis and other facilities such as hospitality, retail malls, SMEs etc targeted at the socio-economic group ABCD.

DOUBLE SIDE FULL GANTRY BY LAMBOGINI ALONG LEKKI EXPRESSWAY



DIMENSIONS : 50m X 4.8M

TRAFFIC COUNT : 250,000 daily

ILLUMINATION

DISPLAY TIME

RESOLUTION

STATUS

This board is located within a high brow real estate axis and other facilities such as hospitality, retail malls, SMEs etc targeted at the socio-economic group ABCD.

ULTRAWAVE GANTRY BOARD ALONG LEKKI EXPRESSWAY



DIMENSIONS : 12m X 3M

TRAFFIC COUNT : 250,000 daily

ILLUMINATION : Front Lit

DISPLAY TIME : 24hours

RESOLUTION

STATUS

This board is located within a high brow residential area with a mix of SME, corporate organizations, hospitality, Oil & Gas business and retail outfits etc. The population spread also includes the ABC socio-economic group.

96SHEET ULTRAWAVE BOARD BY 2ND ROUNDABOUT LEKKI EXPRESSWAY



DIMENSIONS : 12m X 3M

TRAFFIC COUNT : 250,000 daily

ILLUMINATION : Front Lit

DISPLAY TIME : 24hours

RESOLUTION

STATUS

This board is located within a high brow residential area with a mix of SME, corporate organizations, hospitality, Oil & Gas business and retail outfits etc. The population spread also includes the ABC socio-economic group.

DOUBLE SIDED SPECTACULAR UNIPOLE BOARD BY LAMBOGINI LEKKI EXPRESSWAY



DIMENSIONS : 18m X 6M

TRAFFIC COUNT : 250,000 daily

ILLUMINATION

DISPLAY TIME : 24hours

RESOLUTION

STATUS

This board is located within a high brow real estate axis and other facilities such as hospitality, retail malls, SMEs etc targeted at the socio-economic group ABCD.

LAMPPOST ALONG OZUMBA-LEKKI EXPRESSWAY



DIMENSIONS : 1.2m X 2.4M

TRAFFIC COUNT : 250,000 daily

ILLUMINATION : Light Box

DISPLAY TIME

RESOLUTION

STATUS

This board is located within a high brow real estate axis and other facilities such as hospitality, retail malls, SMEs etc targeted at the socio-economic group ABCD.

LAMPPOST ALONG OZUMBA-LEKKI EXPRESSWAY



DIMENSIONS : 1.2m X 2.4M

TRAFFIC COUNT : 250,000 daily

ILLUMINATION

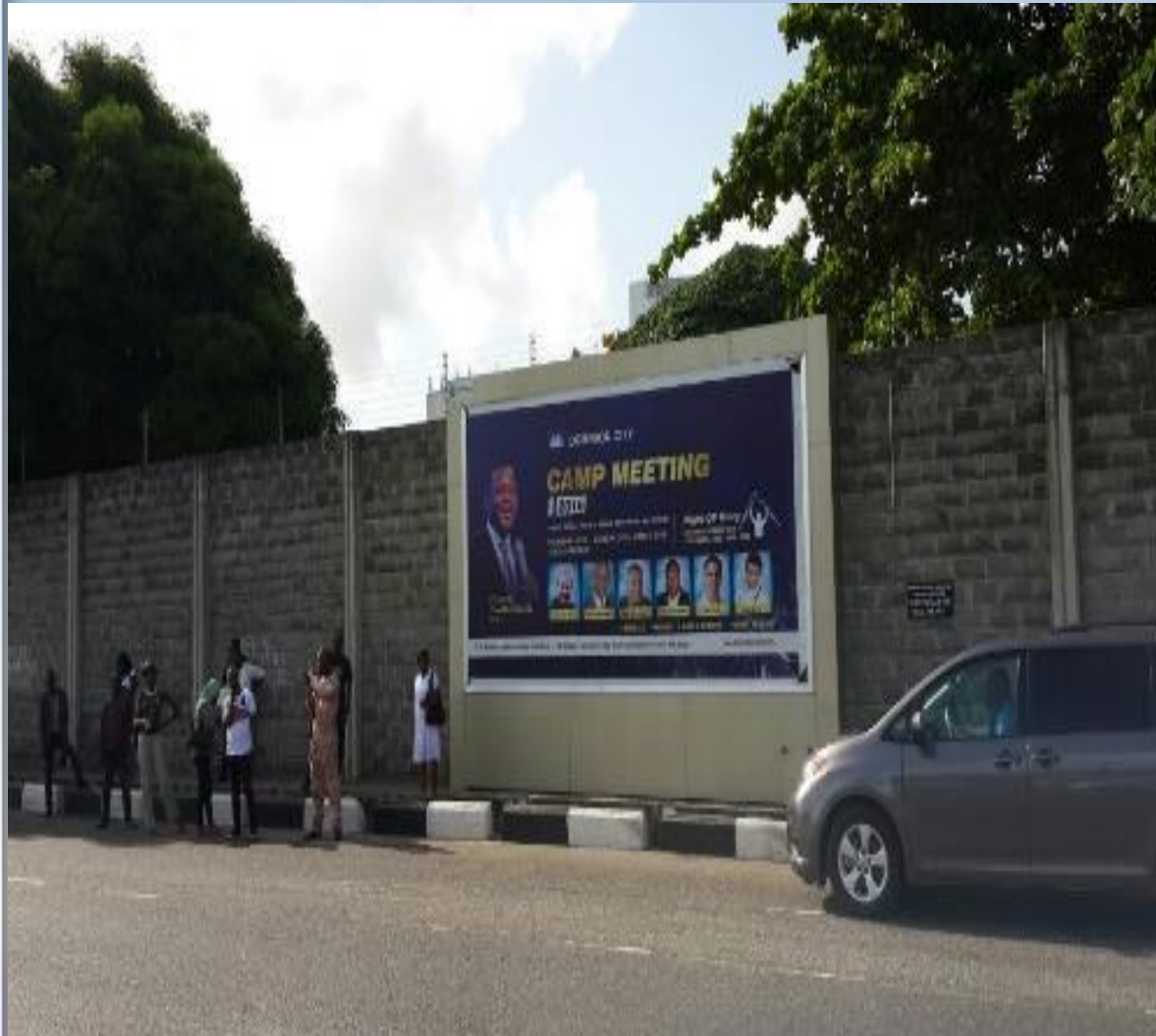
DISPLAY TIME

RESOLUTION

STATUS

This board is located within a high brow real estate axis and other facilities such as hospitality, retail malls, SMEs etc targeted at the socio-economic group ABCD.

WALL MOUNT ALONG 1004/CIVIC CENTRE & LAW SCHOOL



DIMENSIONS : 3m X 6M

TRAFFIC COUNT : 250,000 daily

ILLUMINATION : Back Lit

DISPLAY TIME : 24hours

RESOLUTION

STATUS

This board is located within a high brow residential area with a mix of SME, corporate organizations, hospitality, Oil & Gas business and retail outfits etc. The population spread also includes the ABC socio-economic group.



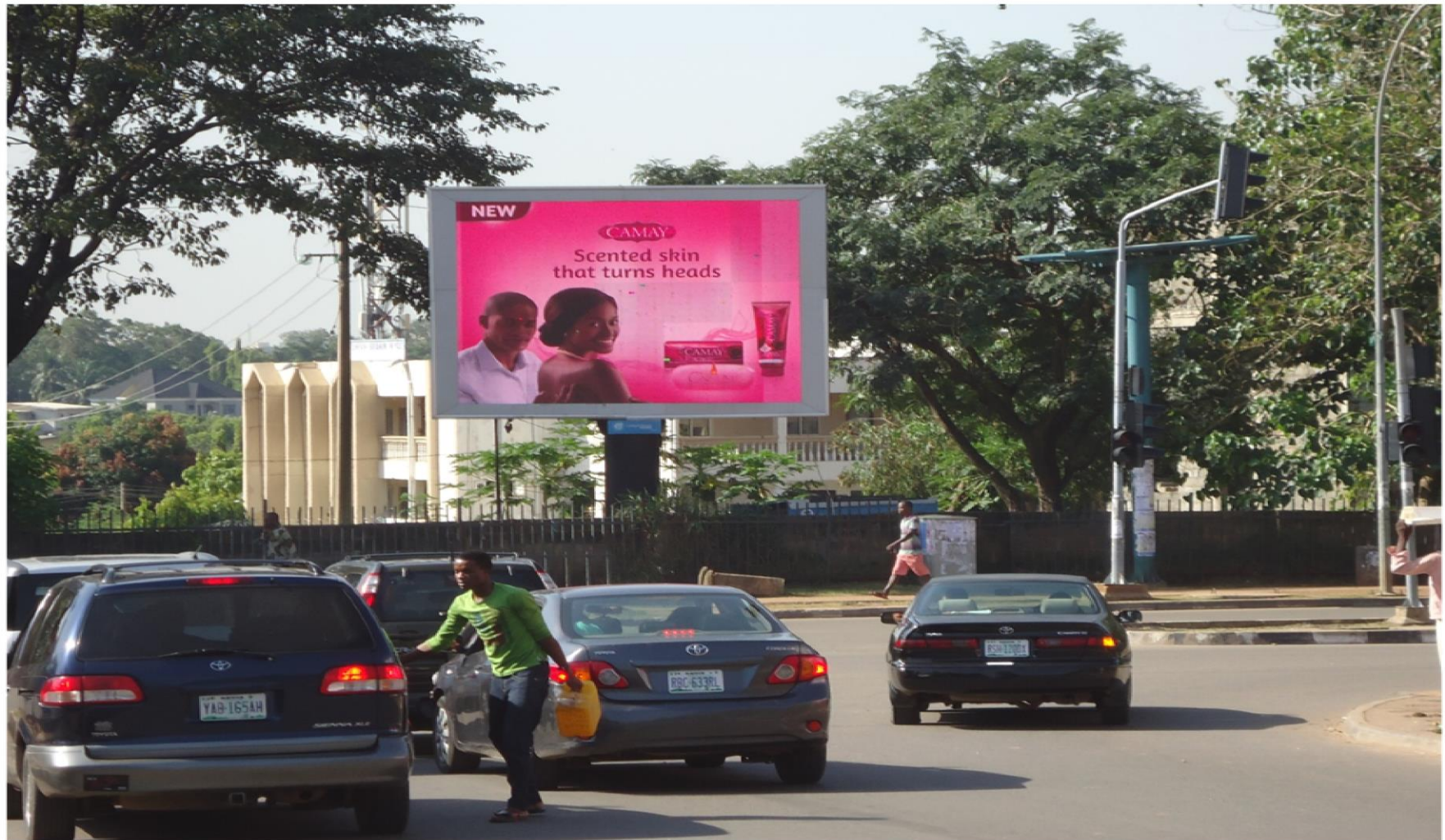
ABUJA

Facts & Figures



- Abuja is the administrative capital city of Nigeria. It is located in the center of Nigeria, within the Federal Capital Territory(FCT). It officially became Nigeria's capital on 12 December 1991, replacing Lagos, though the latter remains the country's most populous city.
- At the 2006 census, the city of Abuja had a population of 776,298, making it one of the ten most populous cities in Nigeria. Abuja has witnessed a huge influx of people into the city; the growth has led to the emergence of satellite towns such as Karu Urban Area, [Suleja](#), Gwagwalada, Lugbe, Kuje and smaller settlements to which the planned city is sprawling.
- The unofficial metropolitan area of Abuja has a population of well over three million and comprises the fourth largest urban area in Nigeria, surpassed only by Lagos, Kano and Ibadan.

LED BOARD BY ADETOKUNBO ADEMOLA ST. WUSE II. DIMENSION: 4M X 3M



LED BOARD BY WUSE MARKET

DIMENSION: 5M X 4M



BRIDGE PANEL BY NEWS ENGINEERING

KUBUWA DIMENSION: 70M X 3M



BRIDGE PANEL BY ALETA VILLAGE AIRPORT ROAD. DIMENSION: 70M X 3M



BRIDGE PANEL BY ALETA VILLAGE AIRPORT ROAD. DIMENSION: 70M X 3M



SINGLE FACE BRIDGE PANEL BY AREA 1

GARKI DIMENSION: 57.5M X 3M



Single Face Bridge Panel by Area 1 Garki

Dimension: 57.5m X 3m



Garki is one of the districts in the phase 1 development plan of Abuja. It was among the first places to be developed when the federal capital moved to Abuja.

It has notable residential, hospitality & shopping malls within the environment.

Double Face Bridge Panel at Area 3

Dimension: 62.5m X 3m



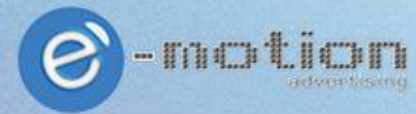
Area 3 is one the 11 areas of Garki, this new Pedestrian Bridge is meant to cater for the massive crowd of people crossing over from Durimi to main Garki and Apo legislative quarters .

It's also a point where commuter board buses and taxis to various satellite towns of Abuja.

It has notable residential, hospitality & shopping malls within the environment

DOUBLE FACE BRIDGE PANEL BY STADIUM NEAR NATIONAL HOSPITAL. DIMENSION: 75M X 3M





PORT-HARCOURT

DOUBLE FACE LED BOARD RUMUOLA JUNCTION PORT HARCOURT



DIMENSIONS :15m X 5m

TRAFFIC COUNT : 200,000

ILLUMINATION : Digital

DISPLAY TIME : 18hours

RESOLUTION

STATUS

Rumuola is a major business district in Port-Harcourt. It links the GRA and PH-Aba expressway. The location comprises of major commercial and hospitality activity. Rumuola junction is also a major transportation hub for Commuters in and out of Port-Harcourt.

DOUBLE FACE LED BOARD RUMUOLA JUNCTION PORT HARCOURT



SINGLE FACE BRIDGE PANELS AT RUMOLA JUNCTION



DIMENSIONS : 50m x 3m

TRAFFIC COUNT : 150,000

ILLUMINATION

DISPLAY TIME

RESOLUTION

STATUS

Rumuola is a major business district in Port-Harcourt. It links the GRA and PH-Aba expressway. The location comprises of major commercial and hospitality activity. Rumuola junction is also a major transportation hub for Commuters in and out of Port-Harcourt

DOUBLE FACE BRIDGE PANELS AT AIRFORCE JUNCTION



DIMENSIONS : 30m x 3m

TRAFFIC COUNT : 50,000

ILLUMINATION

DISPLAY TIME

RESOLUTION

STATUS

Situated along a major link road to the Airport. The location also witness a lot of commercial and residential Activity.

DOUBLE FACE BRIDGE PANELS AT ELEME ROAD



DIMENSIONS : 51m x 3m

TRAFFIC COUNT : 50,000

ILLUMINATION

DISPLAY TIME

RESOLUTION

STATUS

Eleme is a major link road to the NNPC refinery. The location also witness a lot of commercial and residential Activity. It is also a major transportation park.

DOUBLE FACE BRIDGE PANELS AT ELIOSU ROAD



DIMENSIONS : 60m x 3m

TRAFFIC COUNT : 50,000

ILLUMINATION

DISPLAY TIME

RESOLUTION

STATUS

Eliosu junction links Airport road & Rumuokoro axis. The location witnessed a huge commercial, religious and residential activity.

DOUBLE FACE UNIPOLE ALONG BORI CAMP BY BRIGADE BARRACKS



DIMENSIONS :18m x 6m

TRAFFIC COUNT : 35,000

ILLUMINATION

DISPLAY TIME

RESOLUTION

STATUS

Bori Camp Board is situated along the road linking Aba-PH expressway. It is located close the Army brigade and witnesses a lot of high commercial activities.

ONITSHA

DOUBLE FACE BRIDGE PANEL ONITSHA ALONG UPPER IWEKA ROAD



DIMENSIONS :64m x 3m

TRAFFIC COUNT : 50,000

ILLUMINATION

DISPLAY TIME

RESOLUTION

STATUS

Situated along the ever busy Upper Iweka road, this location is the major gateway to Onitsha town from the Niger-Bridge. The location witnesses a high volume of commercial, residential and religious activity.

DOUBLE FACE BRIDGE PANEL ONITSHA ALONG UPPER IWEKA ROAD



DIMENSIONS :64m x 3m

TRAFFIC COUNT : 50,000

ILLUMINATION

DISPLAY TIME

RESOLUTION

STATUS

Situated along the ever busy Upper Iweka road, this location is the major gateway to Onitsha town from the Niger-Bridge. The location witnesses a high volume of commercial, residential and religious activity.

ENUGU

DOUBLE SIDED PORTRAIT, ALONG ARIA ROAD BY NEW MARKET NCFC ROUNDABOUT ENUGU



DIMENSIONS :9m x 12m

TRAFFIC COUNT: 25,000

ILLUMINATION

DISPLAY TIME

RESOLUTION

STATUS

Situated along Aria road that links the GRA Enugu and Presidential layout. The location witnesses a high level of commercial and residential activity. It is close to the new state secretariat.

DOUBLE SIDED PORTRAIT ALONG NKPOKITI ROAD BY IMT ACHALA, ENUGU



DIMENSIONS :9m x 12m

TRAFFIC COUNT: 25,000

ILLUMINATION

DISPLAY TIME

RESOLUTION

STATUS

Situated near Institute of Managements Technology, (IMT) the location witnessed high commercial and residential activities due to the higher institution.

KANO

BRIDGE PANEL BY LEGAL SCHOOL ALONG BAYERO UNIVERSITY ROAD



DIMENSIONS : 30m X 3M

TRAFFIC COUNT : 40,000 daily

ILLUMINATION

DISPLAY TIME

RESOLUTION

STATUS

BUK road is a cosmopolitan area with heavy vehicular traffic.

The location comprises of various educational institutions and commercial Activities especially with financial institutions.

BRIDGE PANEL ALONG KURNA ASABE ROAD, KANO



DIMENSIONS : 26m X 3M

TRAFFIC COUNT : 30,000 daily

ILLUMINATION

DISPLAY TIME

RESOLUTION

STATUS

The bridge is located within an area with high commercial activity. The location comprises of various financial institutions and residential area .

KADUNA

DOUBLE SIDED BRIDGE PANEL BY EASTERN BYE PASS ALONG ABUJA-KADUNA EXPRESSWAY, KADUNA



DIMENSIONS : 54m X 3M

TRAFFIC COUNT : 40,000 daily

ILLUMINATION

DISPLAY TIME

RESOLUTION

STATUS

The eastern bypass allows to decongest the ever-growing traffic into Kaduna metropolis of heavy traffic aimed at giving travellers from Abuja to other parts of the north and passing through Kaduna an alternative route